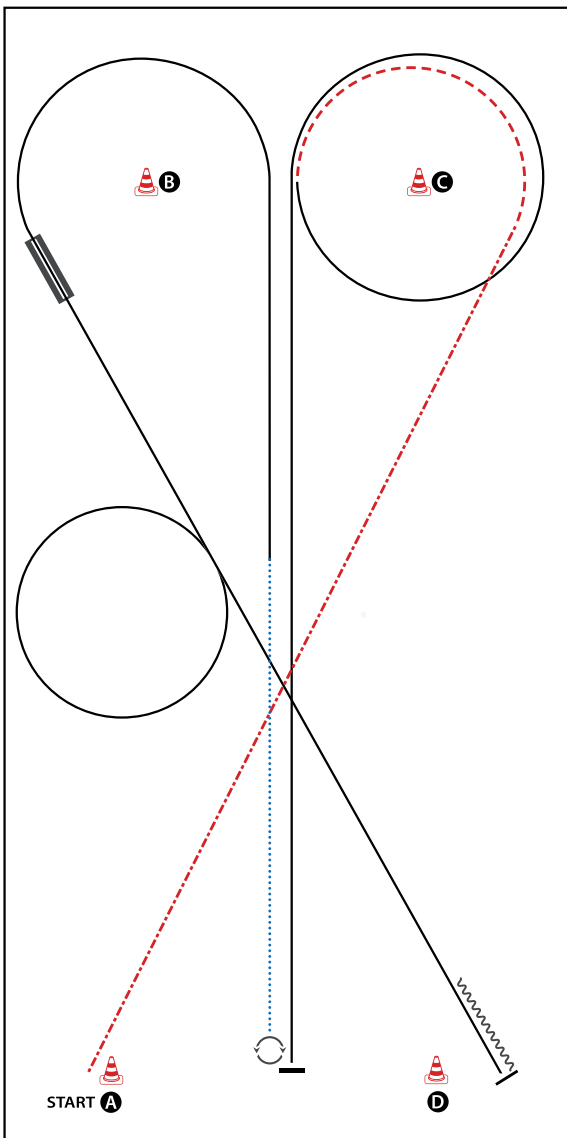




Western Horsemanship

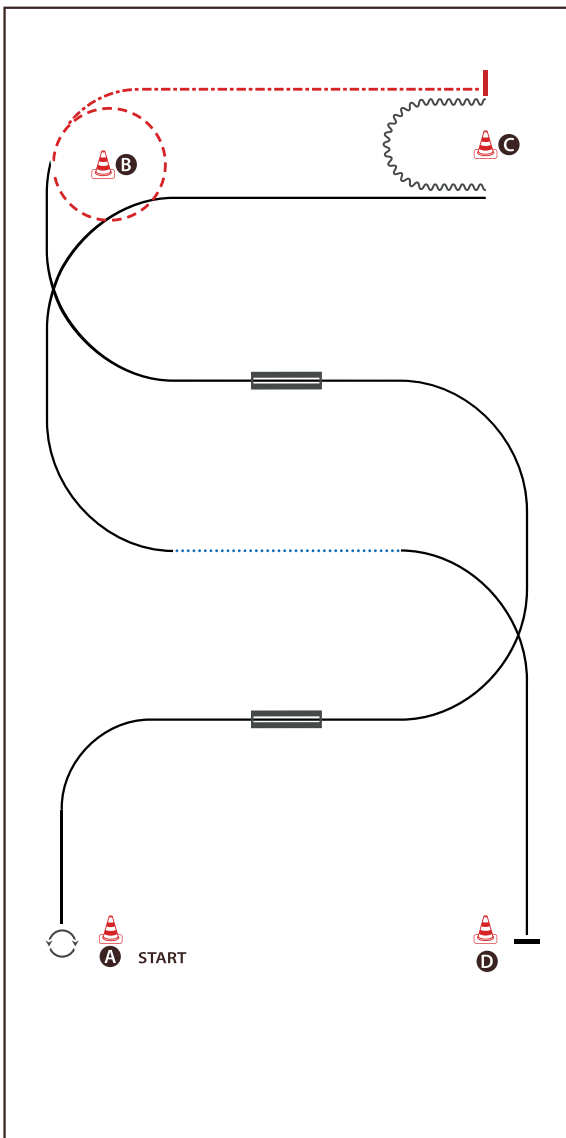
Pattern 1 - 31



BE READY AT A

- 1) EXTENDED JOG
- 2) JOG AROUND C
- 3) LOPE (LL)
- 4) STOP, TURN 540° (LEFT OR RIGHT)
- 5) WALK
- 6) LOPE (LL)
- 7) CHANGE LEADS (SIMPLE OR FLYING)
- 8) LOPE (RL)
- 9) STOP, BACK UP (AT LEAST ONE HORSE LENGTH)
WALK OUT

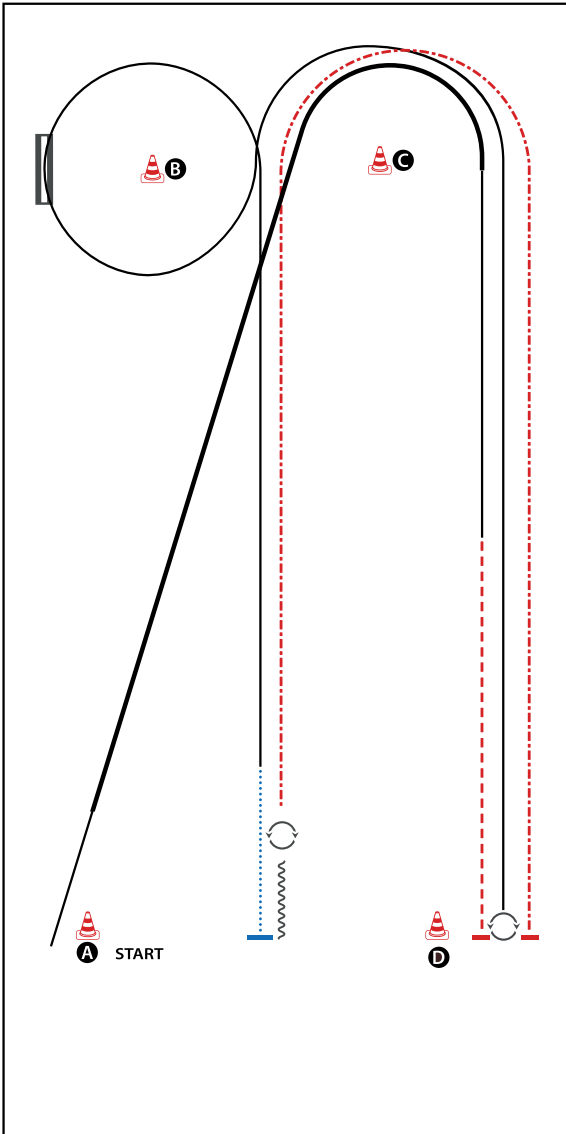
WALK (SCHRITT)	
EXTENDED WALK	
JOG/TROT (TRAB)	
EXTENDED TROT	
LOPE (GALOPP)	
EXTENDED LOPE	
BACK UP (RÜCKWÄRTS)	
LEAD CHANGE (GALOPPWECHSEL)	
TURN (DREHUNG)	
	ERSTE
	WESTENREITER
	UNION
	WESTENREITER



BE READY AT A

- 1) TURN 360° (LEFT OR RIGHT)
- 2) LOPE (RL), CHANGE LEADS (SIMPLE OR FLYING)
- 3) LOPE (LL), CHANGE LEADS (SIMPLE OR FLYING)
- 4) LOPE (RL)
- 5) JOG
- 6) EXTENDED JOG
- 7) STOP, BACK UP
- 8) LOPE (RL)
- 9) WALK
- 10) LOPE (LL), STOP
WALK OUT

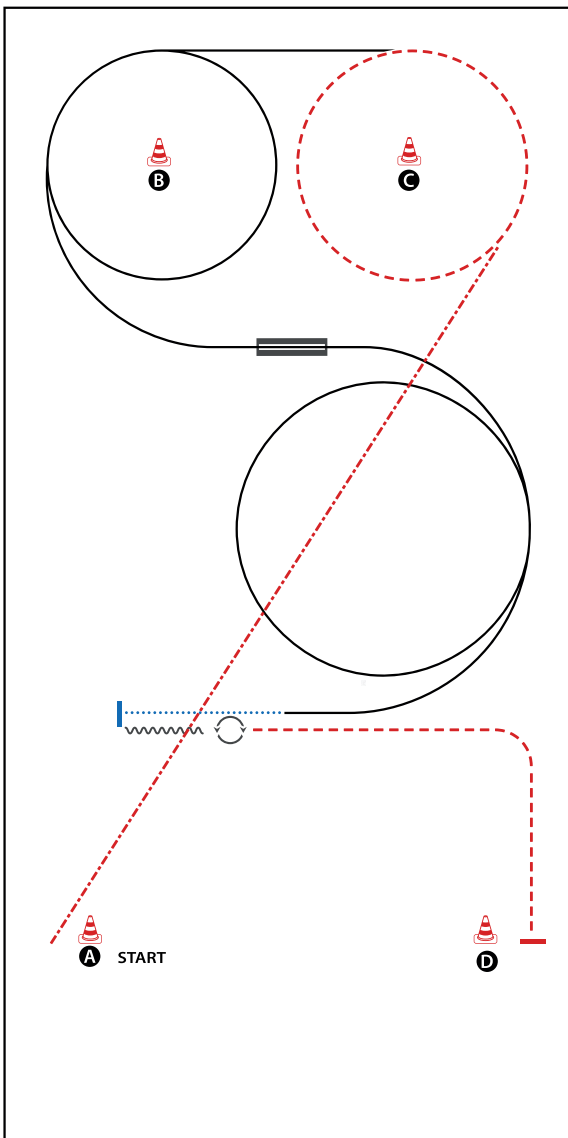
WALK (SCHRITT)	
EXTENDED WALK	
JOG/TROT (TRAB)	
EXTENDED TROT	
LOPE (GALOPP)	
EXTENDED LOPE	
BACK UP (RÜCKWÄRTS)	
LEAD CHANGE (GALOPPWECHSEL)	
TURN (DREHUNG)	
	ERSTE
	WESTENREITER
	UNION
	WESTERNHORSEMANSHIP



BE READY AT A

- 1) LOPE (RL), EXTENDED LOPE, COLLECTED LOPE
- 2) JOG, STOP
- 3) TURN 540° (LEFT OR RIGHT)
- 4) LOPE (LL)
- 5) CHANGE LEADS (SIMPLE OR FLYING)
- 6) LOPE (RL)
- 7) WALK
- 8) STOP, BACK UP (AT LEAST ONE HORSE LENGTH)
- 9) TURN 180° (LEFT OR RIGHT)
- 10) EXTENDED JOG, STOP
WALK OUT

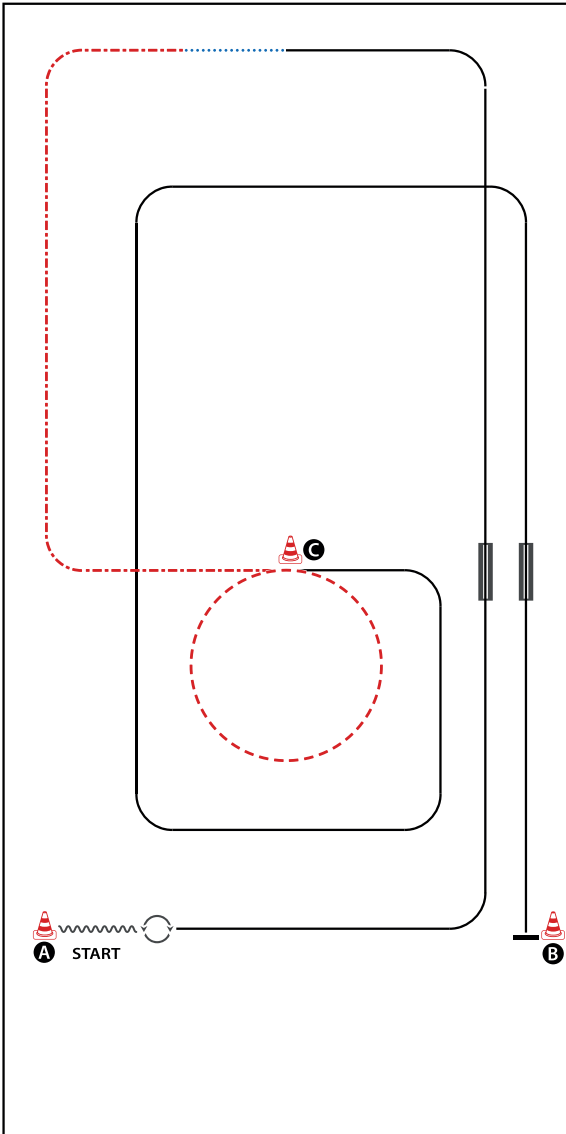
WALK (SCHRITT)	
EXTENDED WALK	
JOG/TROT (TRAB)	
EXTENDED TROT	
LOPE (GALOPP)	
EXTENDED LOPE	
BACK UP (RÜCKWÄRTS)	
LEAD CHANGE (GALOPPWECHSEL)	
TURN (DREHUNG)	
	ERSTE
	WESTENREITER
	UNION
	WELDPFERDEBUND WESTERWALD



BE READY AT A

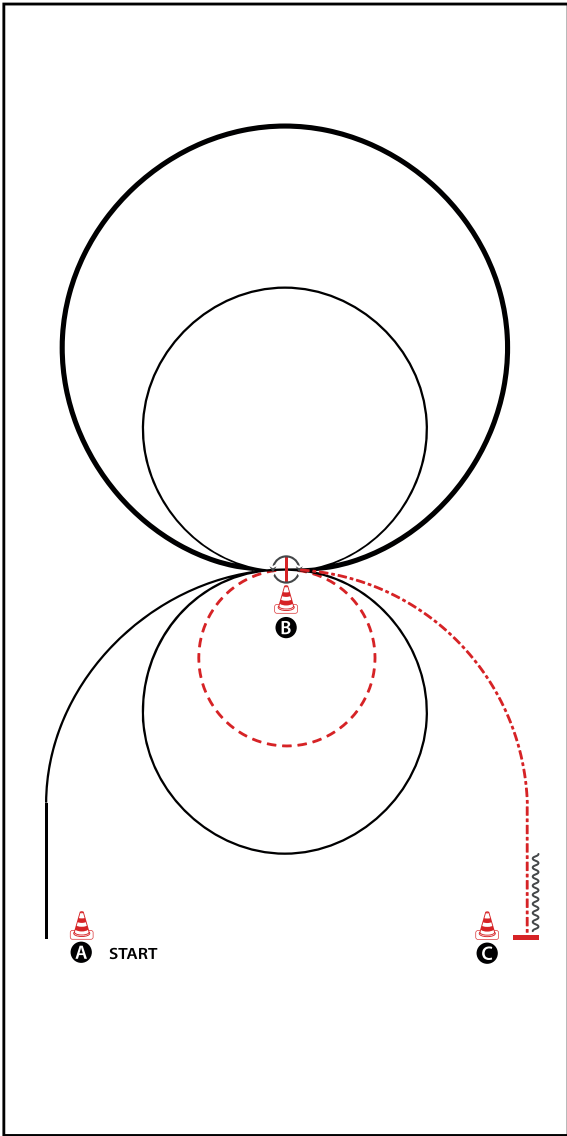
- 1) EXTENDED JOG
- 2) JOG
- 3) LOPE (LL)
- 4) CHANGE LEADS (SIMPLE OR FLYING)
- 5) LOPE (RL)
- 6) WALK
- 7) STOP, BACK UP (AT LEAST ONE HORSE LENGTH)
- 8) TURN 540° (LEFT OR RIGHT)
- 9) JOG, STOP
WALK OUT

WALK (SCHRITT)	
EXTENDED WALK	
JOG/TROT (TRAB)	
EXTENDED TROT	
LOPE (GALOPP)	
EXTENDED LOPE	
BACK UP (RÜCKWÄRTS)	
LEAD CHANGE (GALOPPWECHSEL)	
TURN (DREHUNG)	
	ERSTE
	WESTENREITER
	UNION
	WELDPFERDEBUND WESTERWORLD


BE READY AT A

- 1) (MARKER IN FRONT OF YOUR HORSE),
BACK UP (AT LEAST ONE HORSE LENGTH)
- 2) TURN 540° (LEFT OR RIGHT)
- 3) LOPE (LL)
- 4) CHANGE LEADS (SIMPLE OR FLYING)
- 5) LOPE (RL)
- 6) WALK
- 7) EXTENDED JOG
- 8) JOG
- 9) LOPE (RL)
- 10) CHANGE LEADS (SIMPLE OR FLYING), LOPE (LL), STOP
WALK OUT

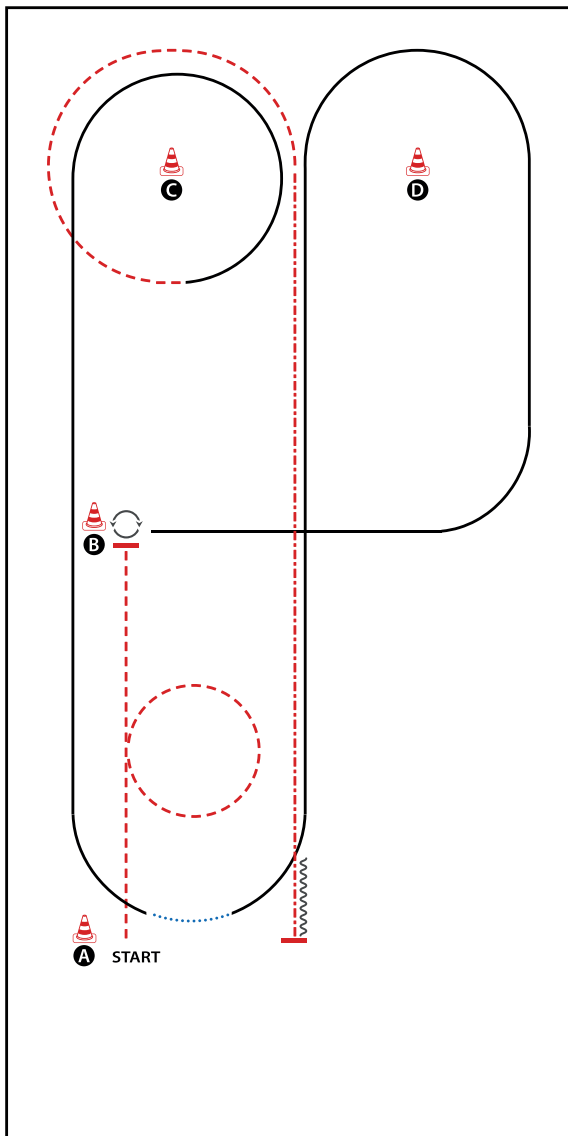
WALK (SCHRITT)
EXTENDED WALK
JOG/TROT (TRAB)	-----
EXTENDED TROT	-----
LOPE (GALOPP)	=====
EXTENDED LOPE	=====
BACK UP (RÜCKWÄRTS)	~~~~~
LEAD CHANGE (GALOPPWECHSEL)	=====
TURN (DREHUNG)	⤿
	ERSTE WESTERWEITER UNION WIEDERHOLENDE WEITERWEITER



BE READY AT A

- 1) LOPE (RL), STOP
- 2) TURN 360° (LEFT OR RIGHT)
- 3) EXTENDED LOPE (LL) CIRCLE
- 4) COLLECTED LOPE (LL) SMALL CIRCLE
- 5) JOG SMALL CIRCLE RIGHT
- 6) LOPE (RL) CIRCLE
- 7) EXTENDED JOG, STOP
- 8) BACK UP (AT LEAST ONE HORSE LENGTH), STOP
WALK OUT

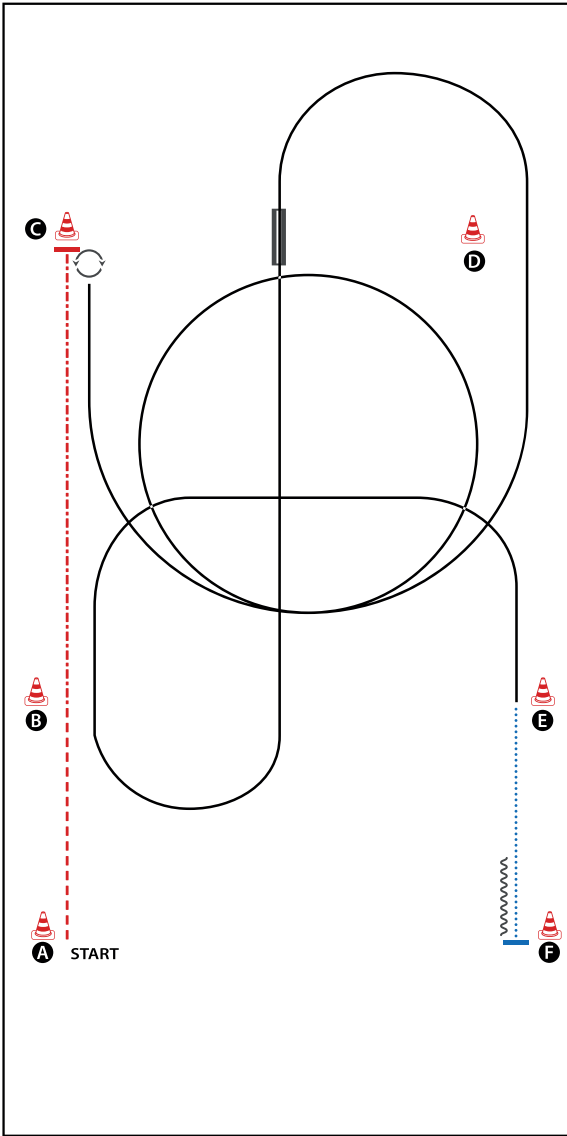
WALK (SCHRITT)	
EXTENDED WALK	
JOG/TROT (TRAB)	
EXTENDED TROT	
LOPE (GALOPP)	
EXTENDED LOPE	
BACK UP (RÜCKWÄRTS)	
LEAD CHANGE (GALOPPWECHSEL)	
TURN (DREHUNG)	
ERSTE	
WESTERBREITER	
UNION	
WORLDHORSEPOWER ASSOCIATION	



BE READY AT A

- 1) JOG
- 2) STOP, TURN 270° LEFT
- 3) LOPE (LL)
- 4) LOPE (LL) AROUND D
- 5) CHANGE LEADS SIMPLE BY WALK
- 6) LOPE (RL)
- 7) LOPE (RL) AROUND C
- 8) JOG AROUND C
- 9) EXTENDED JOG
- 10) STOP, BACK UP (AT LEAST ONE HORSE LENGTH)
WALK OUT

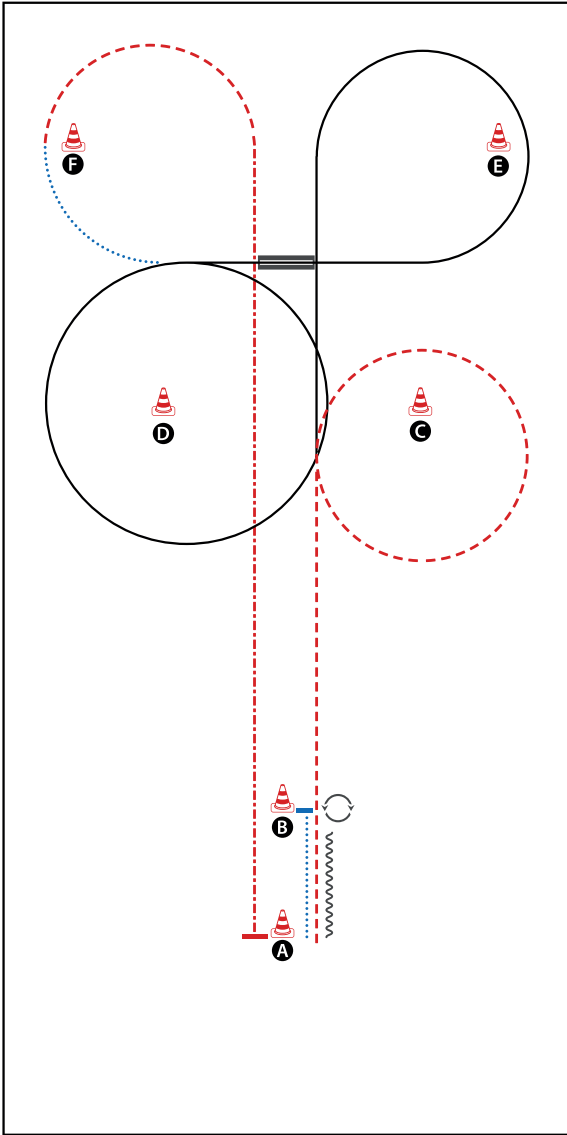
WALK (SCHRITT)
EXTENDED WALK
JOG/TROT (TRAB)
EXTENDED TROT
LOPE (GALOPP)	—————
EXTENDED LOPE	—————
BACK UP (RÜCKWÄRTS)	~~~~~
LEAD CHANGE (GALOPPWECHSEL)	=====
TURN (DREHUNG)	↻
ERSTE	—————
WESTREITER	—————
UNION	—————
WESTERNHORSEMANSHIP	—————



BE READY AT A

- 1) JOG
- 2) EXTENDED JOG
- 3) STOP, TURN 540° RIGHT
- 4) LOPE (LL)
- 5) LOPE (LL) SMALL CIRCLE
- 6) CHANGE LEADS (SIMPLE OR FLYING)
- 7) LOPE (RL)
- 8) WALK
- 9) STOP, BACK UP (AT LEAST ONE HORSE LENGTH)
WALK OUT

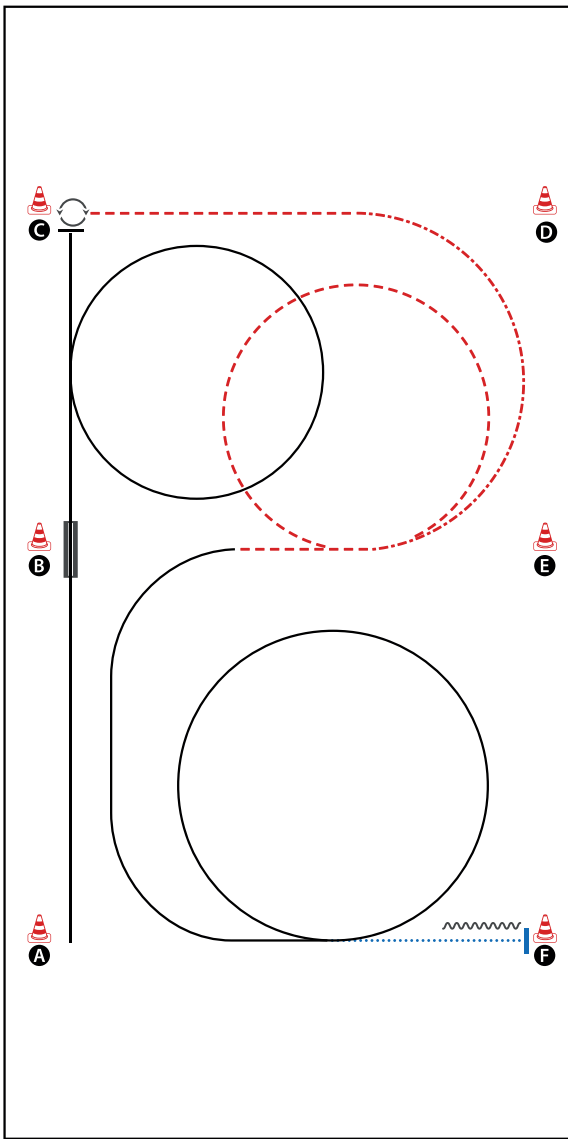
WALK (SCHRITT)	
EXTENDED WALK	
JOG/TROT (TRAB)	
EXTENDED TROT	
LOPE (GALOPP)	
EXTENDED LOPE	
BACK UP (RÜCKWÄRTS)	
LEAD CHANGE (GALOPPWECHSEL)	
TURN (DREHUNG)	
	ERSTE
	WESTENREITER
	UNION
	WORLDHORSEPOWER ASSOCIATION



BE READY AT A

- 1) WALK
- 2) STOP, TURN 360° RIGHT
- 3) BACK UP TO A
- 4) JOG
- 5) LOPE (RL)
- 6) CHANGE LEADS (SIMPLE OR FLYING)
- 7) LOPE (LL)
- 8) WALK
- 9) JOG
- 10) EXTENDED JOG, STOP
WALK OUT

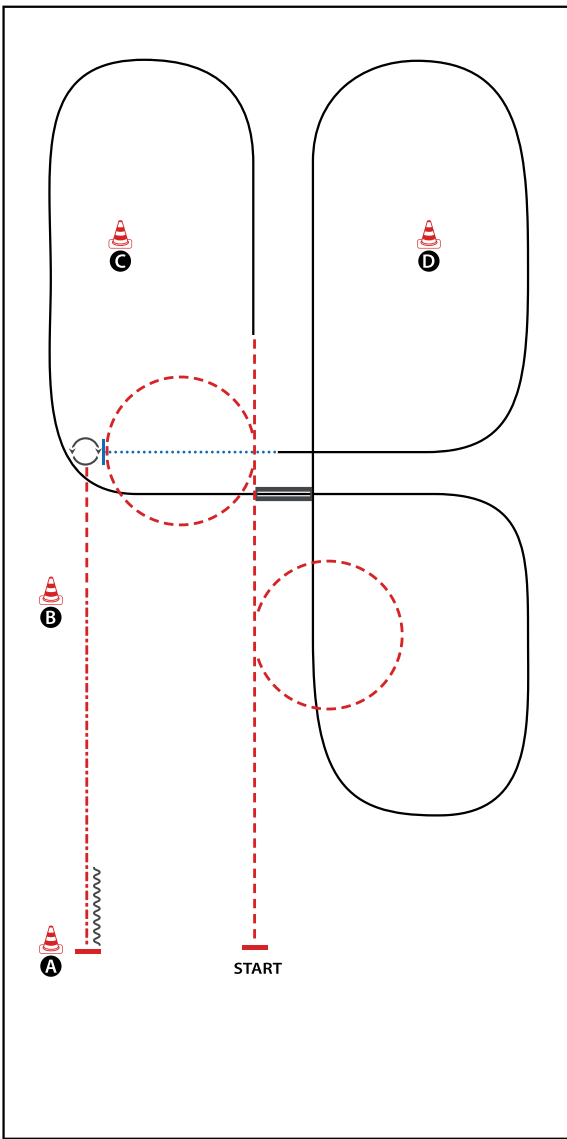
WALK (SCHRITT)
EXTENDED WALK
JOG/TROT (TRAB)
EXTENDED TROT
LOPE (GALOPP)
EXTENDED LOPE
BACK UP (RÜCKWÄRTS)	~~~~~
LEAD CHANGE (GALOPPWECHSEL)	=====
TURN (DREHUNG)	↻
	ERSTE
	WESTENREITER
	UNION
	WESTENREITER



BE READY AT A

- 1) LOPE (LL)
- 2) CHANGE LEADS (SIMPLE OR FLYING)
- 3) LOPE (RL)
- 4) STOP, TURN 270° LEFT
- 5) JOG
- 6) EXTENDED JOG, JOG
- 7) LOPE (LL)
- 8) LOPE (LL) SMALL CIRCLE
- 9) WALK
- 10) STOP, BACK UP (AT LEAST ONE HORSE LENGTH)
WALK OUT

WALK (SCHRITT)	
EXTENDED WALK	
JOG/TROT (TRAB)	
EXTENDED TROT	
LOPE (GALOPP)	
EXTENDED LOPE	
BACK UP (RÜCKWÄRTS)	
LEAD CHANGE (GALOPPWECHSEL)	
TURN (DREHUNG)	
	ERSTE
	WESTENREITER
	UNION
	WESTENREITER

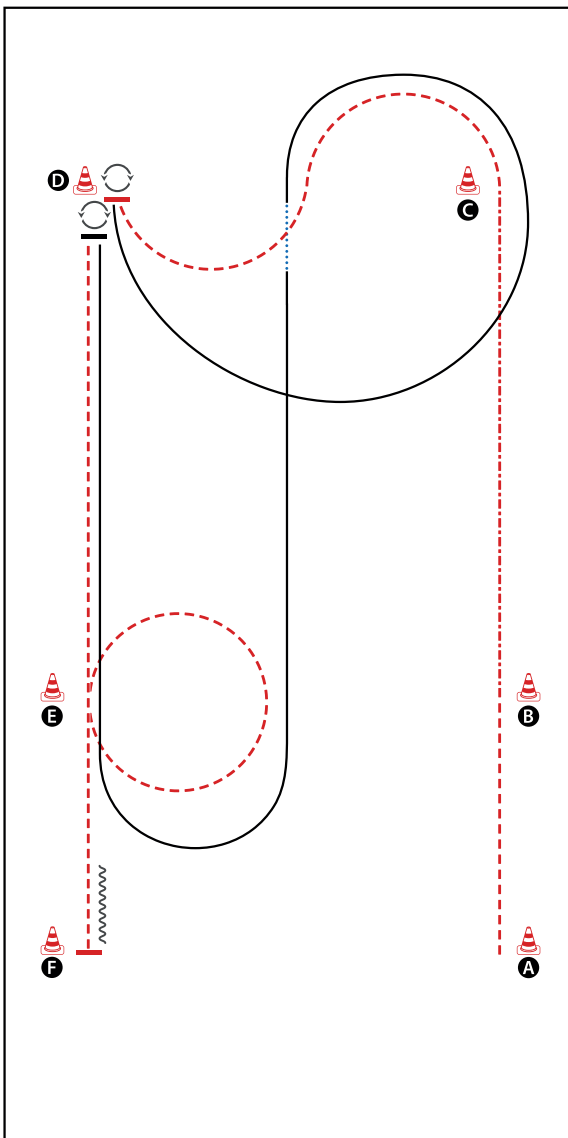


BE READY

- 1) JOG
- 2) JOG SMALL CIRCLE RIGHT, JOG
- 3) JOG SMALL CIRCLE LEFT
- 4) LOPE (LL)
- 5) CHANGE LEADS (SIMPLE OR FLYING)
- 6) LOPE (RL)
- 7) WALK
- 8) STOP, TURN 450° LEFT
- 9) JOG, EXTENDED JOG
- 10) STOP, BACK UP (AT LEAST ONE HORSE LENGTH)
WALK OUT

WALK (SCHRITT)	
EXTENDED WALK	
JOG/TROT (TRAB)	
EXTENDED TROT	
LOPE (GALOPP)	
EXTENDED LOPE	
BACK UP (RÜCKWÄRTS)	
LEAD CHANGE (GALOPPWECHSEL)	
TURN (DREHUNG)	

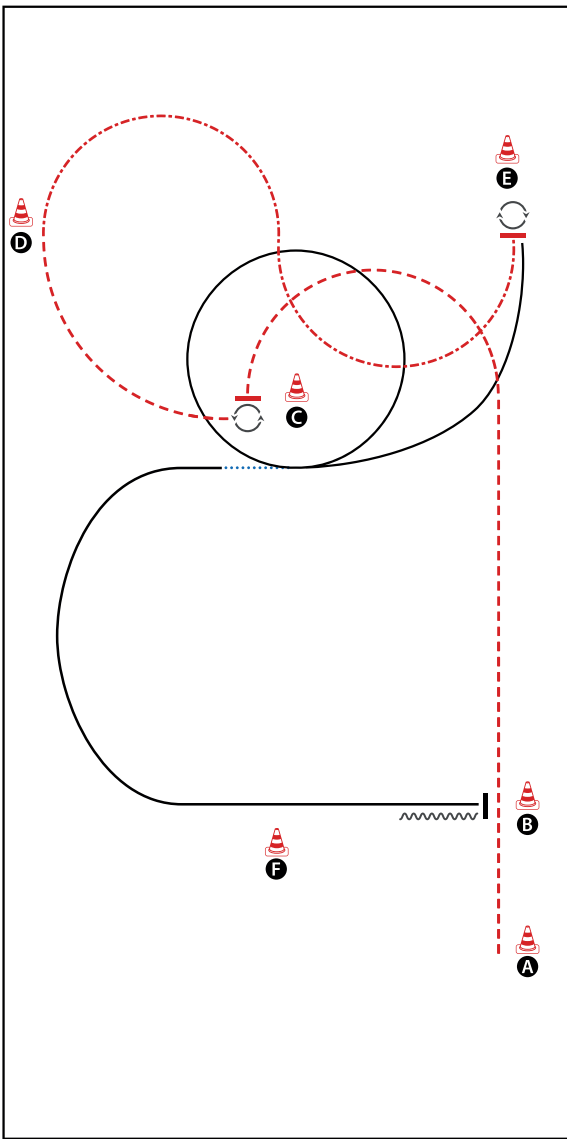
ERSTE WESTENREITER
 UNION WESTENREITER
 WESTENREITER UNION



BE READY AT A

- 1) JOG
- 2) EXTENDED JOG
- 3) JOG SERPENTINE
- 4) STOP, TURN 540° LEFT
- 5) LOPE (LL)
- 6) CHANGE LEADS SIMPLE BY WALK
- 7) LOPE (RL)
- 8) STOP, TURN 180° RIGHT
- 9) JOG
- 10) STOP, BACK UP (AT LEAST ONE HORSE LENGTH)
WALK OUT

WALK (SCHRITT)	
EXTENDED WALK	
JOG/TROT (TRAB)	
EXTENDED TROT	
LOPE (GALOPP)	
EXTENDED LOPE	
BACK UP (RÜCKWÄRTS)	
LEAD CHANGE (GALOPPWECHSEL)	
TURN (DREHUNG)	
	ERSTE
	WESTENREITER
	UNION
	WELDPFERDEBUND WESTERWALD

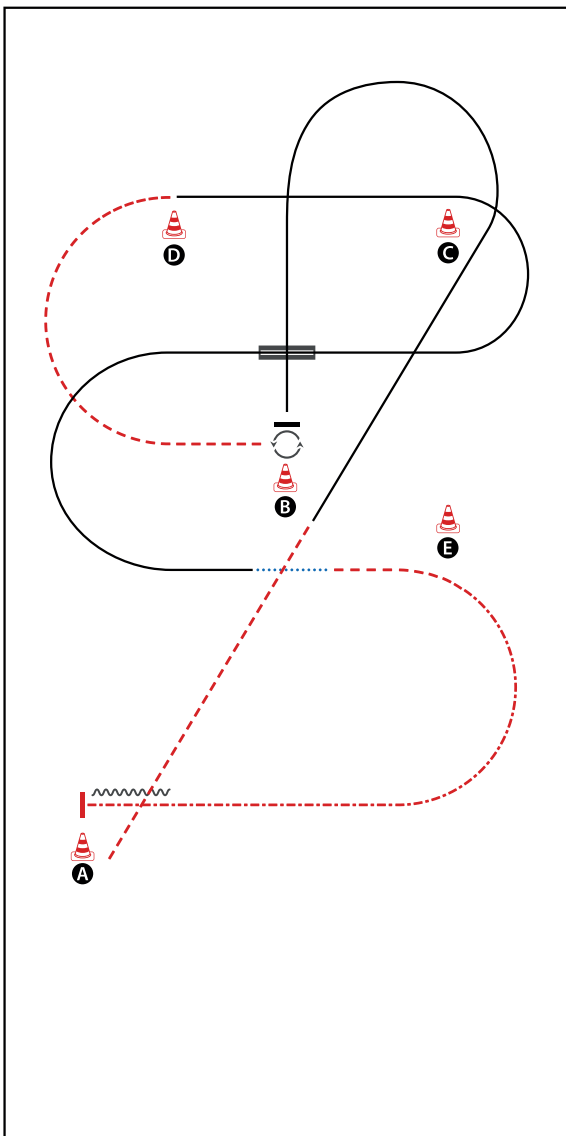


BE READY AT A

- 1) JOG
- 2) STOP, TURN 270° LEFT
- 3) JOG
- 4) EXTENDED JOG
- 5) STOP, TURN 180° RIGHT
- 6) LOPE (RL)
- 7) CHANGE LEADS SIMPLE BY WALK
- 8) LOPE (LL)
- 9) STOP
- 10) BACK UP (AT LEAST ONE HORSE LENGTH)
WALK OUT

WALK (SCHRITT)	
EXTENDED WALK	
JOG/TROT (TRAB)	
EXTENDED TROT	
LOPE (GALOPP)	
EXTENDED LOPE	
BACK UP (RÜCKWÄRTS)	
LEAD CHANGE (GALOPPWECHSEL)	
TURN (DREHUNG)	

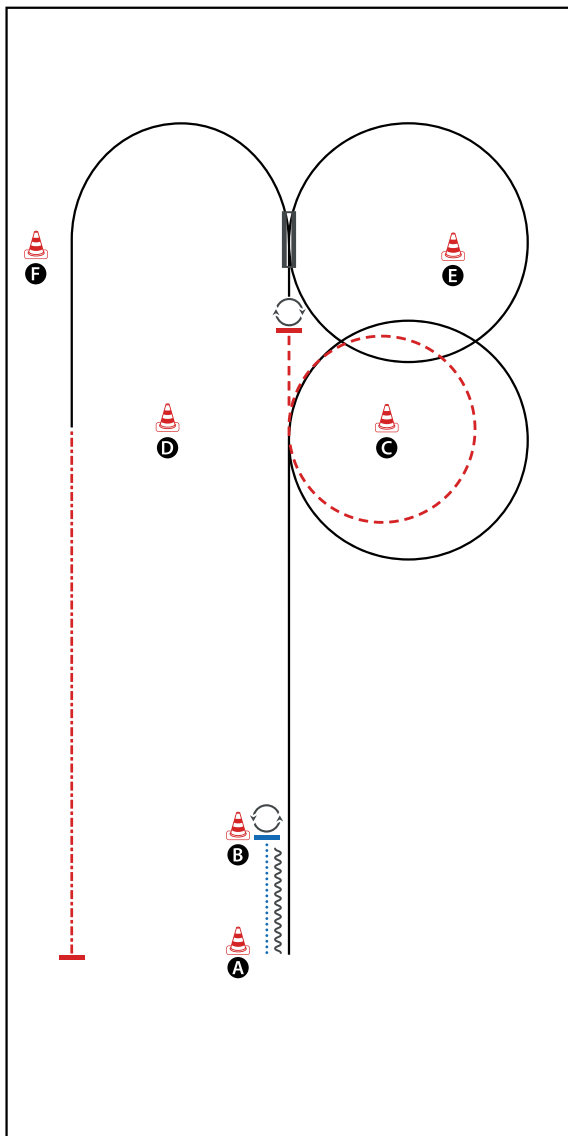
ERSTE WESTENREITER
 UNION WESTENREITER
 WESTENREITER WESTENREITER



BE READY AT A

- 1) JOG
- 2) LOPE (LL)
- 3) STOP, TURN 270° LEFT
- 4) JOG
- 5) LOPE (RL)
- 6) CHANGE LEADS (SIMPLE OR FLYING)
- 7) LOPE (LL), WALK
- 8) JOG
- 9) EXTENDED JOG
- 10) STOP, BACK UP (AT LEAST ONE HORSE LENGTH)
WALK OUT

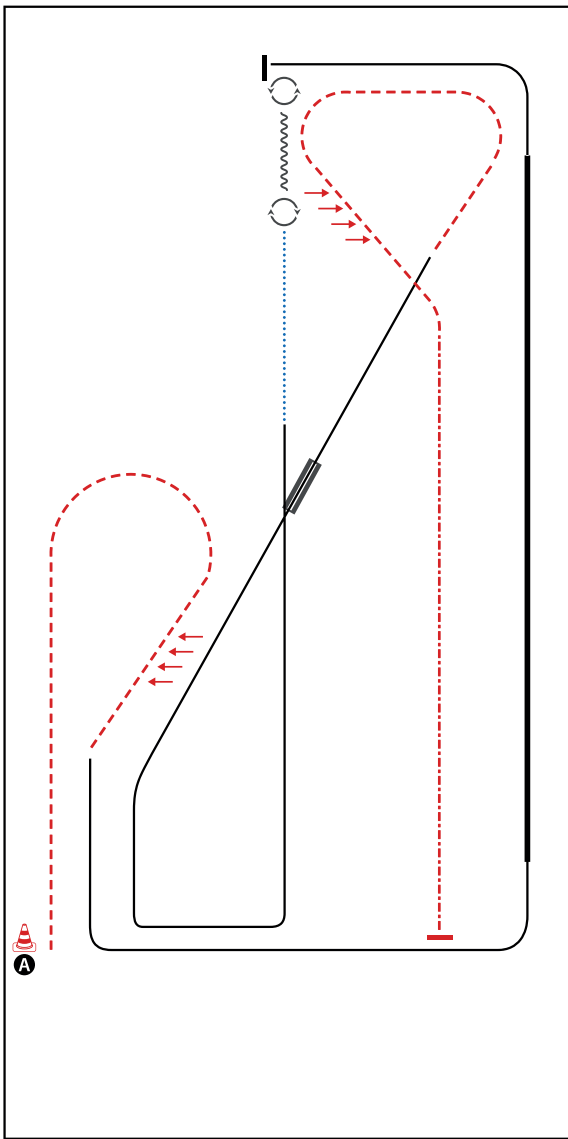
WALK (SCHRITT)	
EXTENDED WALK	
JOG/TROT (TRAB)	
EXTENDED TROT	
LOPE (GALOPP)	
EXTENDED LOPE	
BACK UP (RÜCKWÄRTS)	
LEAD CHANGE (GALOPPWECHSEL)	
TURN (DREHUNG)	
ERSTE	
WESTERBREITER	
UNION	
WESTERHORSEMANSHIP ASSOCIATION	



BE READY AT A

- 1) WALK
- 2) STOP, TURN 360° RIGHT
- 3) BACK UP TO A
- 4) LOPE (RL)
- 5) JOG
- 6) STOP, TURN 360° LEFT
- 7) LOPE (RL)
- 8) CHANGE LEADS (SIMPLE OR FLYING)
- 9) LOPE (LL)
- 10) EXTENDED JOG, STOP
WALK OUT

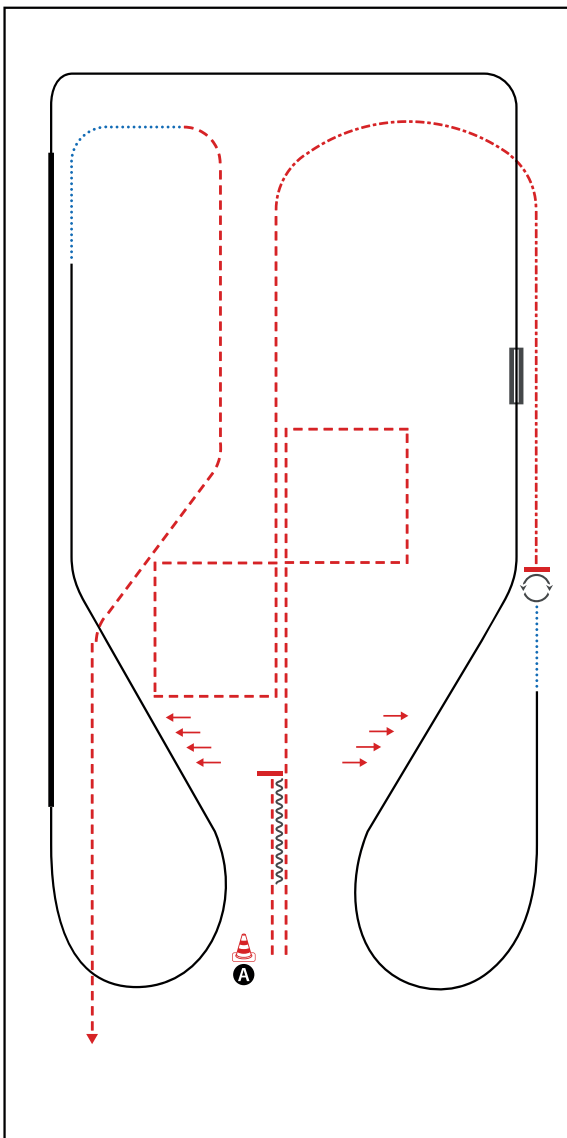
WALK (SCHRITT)
EXTENDED WALK
JOG/TROT (TRAB)
EXTENDED TROT
LOPE (GALOPP)
EXTENDED LOPE
BACK UP (RÜCKWÄRTS)
LEAD CHANGE (GALOPPWECHSEL)
TURN (DREHUNG)
	ERSTE WESTERWEITER UNION WESTERWEITER WESTERWEITER



BE READY AT A

- 1) JOG, TWO TRACK RIGHT
- 2) LOPE (LL)
- 3) EXTENDED LOPE (LL), COLLECTED LOPE (LL)
- 4) STOP, TURN 450° RIGHT
- 5) BACK UP (AT LEAST ONE HORSE LENGTH)
- 6) TURN 540° LEFT
- 7) WALK, LOPE RL CORNERS
- 8) CHANGE LEADS (SIMPLE OR FLYING) LOPE (LL)
- 9) JOG, TWO TRACK LEFT
- 10) EXTENDED JOG, STOP
WALK OUT

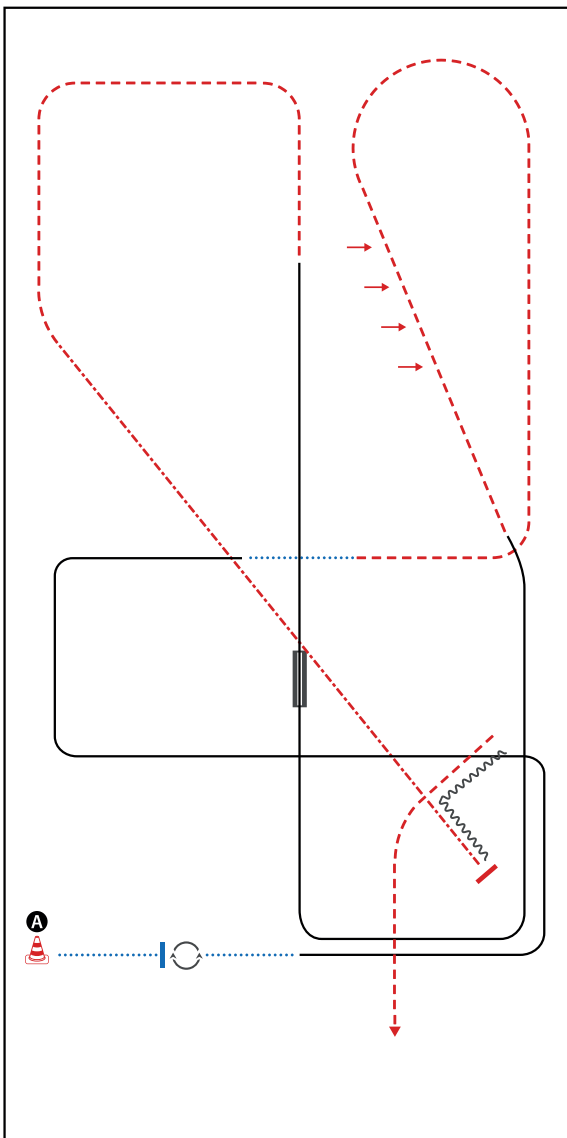
WALK (SCHRITT)	
EXTENDED WALK	
JOG/TROT (TRAB)	
EXTENDED TROT	
LOPE (GALOPP)	
EXTENDED LOPE	
BACK UP (RÜCKWÄRTS)	
LEAD CHANGE (GALOPPWECHSEL)	
TURN (DREHUNG)	
ERSTE	
WESTENREITER	
UNION	
WESTENREITER WESTENREITER	



BE READY AT A

- 1) JOG, STOP, BACK UP (AT LEAST ONE HORSE LENGTH)
- 2) JOG CORNERS
- 3) EXTENDED JOG
- 4) STOP, TURN 360° (LEFT OR RIGHT)
- 5) WALK, LOPE (RL)
- 6) TWO TRACK RIGHT
- 7) CHANGE LEADS (SIMPLE OR FLYING)
- 8) LOPE LL, EXTENDED LOPE (LL), COLLECTED LOPE (LL)
- 9) TWO TRACK LEFT
- 10) WALK, JOG
JOG OUT

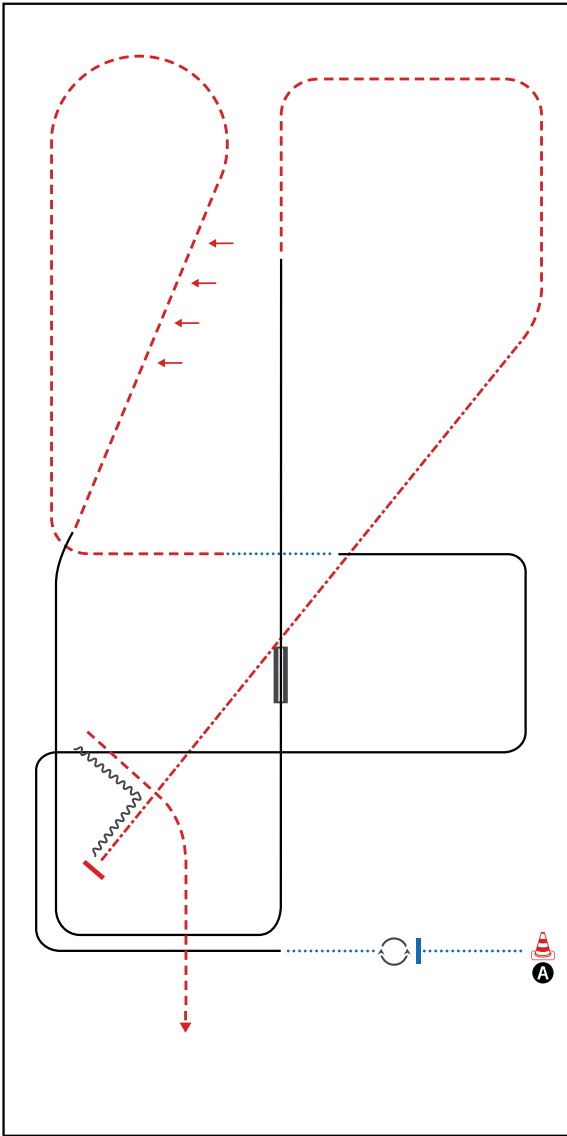
WALK (SCHRITT)	
EXTENDED WALK	
JOG/TROT (TRAB)	
EXTENDED TROT	
LOPE (GALOPP)	
EXTENDED LOPE	
BACK UP (RÜCKWÄRTS)	
LEAD CHANGE (GALOPPWECHSEL)	
TURN (DREHUNG)	
	ERSTE
	WESTENREITER
	UNION
	WORLDHORSEPOWER ASSOCIATION



BE READY AT A

- 1) WALK
- 2) STOP, TURN 360° (LEFT OR RIGHT), WALK
- 3) LOPE (LL)
- 4) WALK, JOG
- 5) JOG TWO TRACK LEFT
- 6) LOPE (RL)
- 7) CHANGE LEADS (SIMPLE OR FLYING)
- 8) LOPE (LL), JOG
- 9) EXTENDED JOG, STOP
- 10) BACK UP, JOG OUT

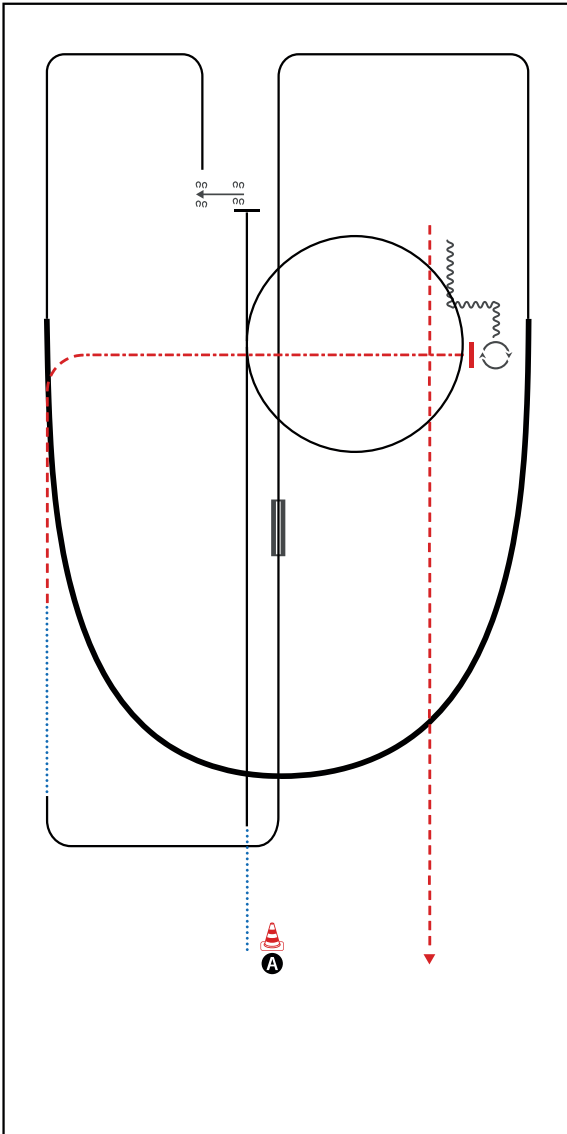
WALK (SCHRITT)	
EXTENDED WALK	
JOG/TROT (TRAB)	
EXTENDED TROT	
LOPE (GALOPP)	
EXTENDED LOPE	
BACK UP (RÜCKWÄRTS)	
LEAD CHANGE (GALOPPWECHSEL)	
TURN (DREHUNG)	
	ERSTE
	WESTENREITER
	UNION
	WESTERHORSEMANSHIP



BE READY AT A

- 1) WALK
- 2) STOP, TURN 360° (LEFT OR RIGHT), WALK
- 3) LOPE (RL)
- 4) WALK, JOG
- 5) JOG TWO TRACK RIGHT
- 6) LOPE (LL)
- 7) CHANGE LEADS (SIMPLE OR FLYING)
- 8) LOPE RL, JOG
- 9) EXTENDED JOG, STOP
- 10) BACK UP, JOG OUT

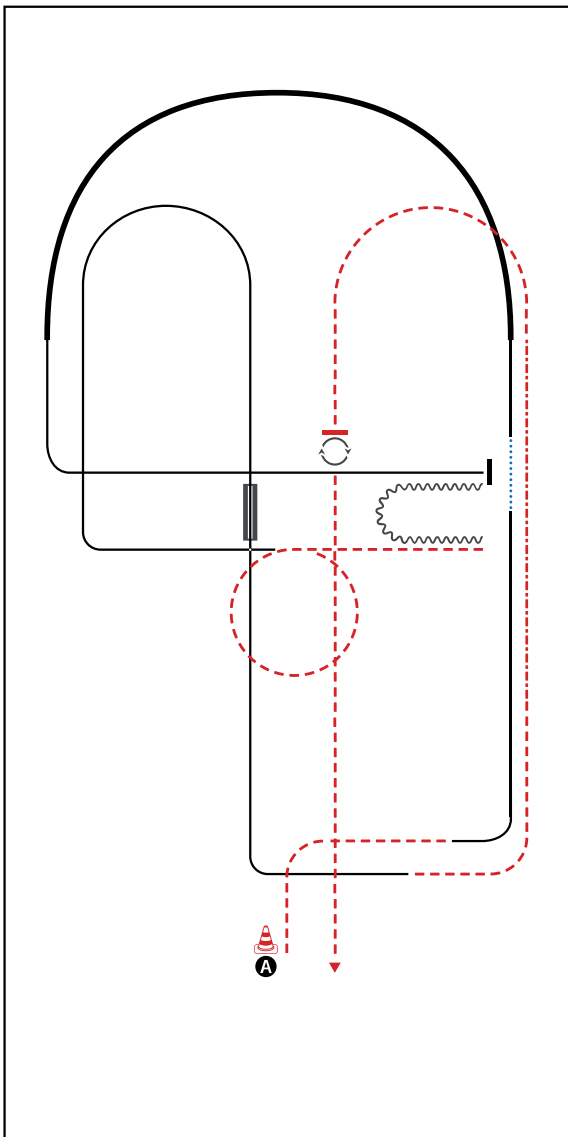
WALK (SCHRITT)	
EXTENDED WALK	
JOG/TROT (TRAB)	
EXTENDED TROT	
LOPE (GALOPP)	
EXTENDED LOPE	
BACK UP (RÜCKWÄRTS)	
LEAD CHANGE (GALOPPWECHSEL)	
TURN (DREHUNG)	
	ERSTE
	WESTERBREITER
	UNION
	WESTERUNION



BE READY AT A

- 1) WALK
- 2) LOPE (RL)
- 3) STOP, SIDEPASS LEFT
- 4) LOPE (LL)
- 5) EXTENDED LOPE (LL), COLLECTED LOPE (LL)
- 6) CHANGE LEADS (SIMPLE OR FLYING)
- 7) LOPE (RL), WALK
- 8) JOG, EXTENDED JOG
- 9) STOP, TURN 450° RIGHT
- 10) BACK UP, JOG OUT

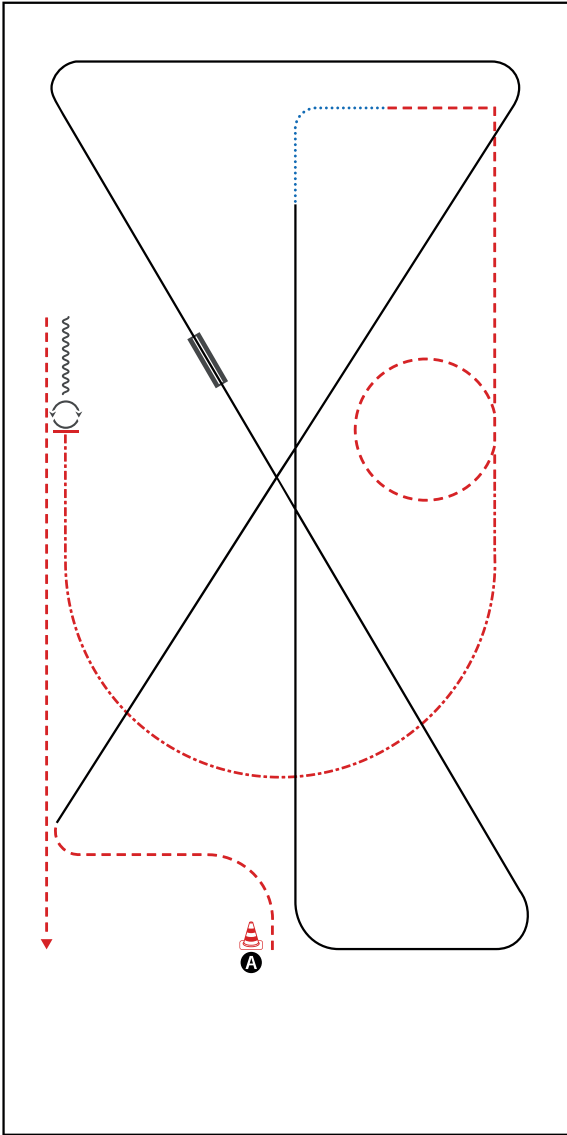
WALK (SCHRITT)	
EXTENDED WALK	
JOG/TROT (TRAB)	
EXTENDED TROT	
LOPE (GALOPP)	
EXTENDED LOPE	
BACK UP (RÜCKWÄRTS)	
LEAD CHANGE (GALOPPWECHSEL)	
TURN (DREHUNG)	
ERSTE	
WESTERBREITER	
UNION	
WESTERHORSEMANSHIP	



BE READY AT A

- 1) JOG
- 2) LOPE (RL), WALK
- 3) LOPE (LL), EXTENDED LOPE (LL), COLLECTED LOPE (LL)
- 4) STOP, BACK UP
- 5) JOG
- 6) LOPE (RL)
- 7) CHANGE LEADS (SIMPLE OR FLYING), LOPE (LL)
- 8) JOG, EXTENDED JOG, JOG
- 9) STOP, TURN ON THE FOREHAND 180° RIGHT,
TURN ON THE HAUNCHES 540° LEFT
- 10) JOG OUT

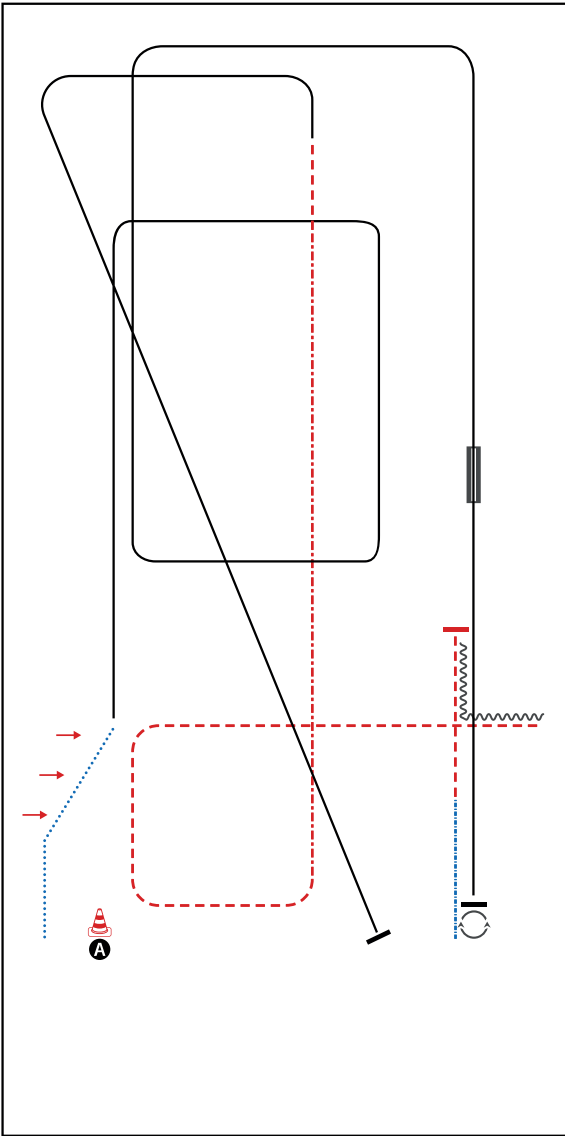
WALK (SCHRITT)
EXTENDED WALK
JOG/TROT (TRAB)	-----
EXTENDED TROT	-----
LOPE (GALOPP)	-----
EXTENDED LOPE	-----
BACK UP (RÜCKWÄRTS)	~~~~~
LEAD CHANGE (GALOPPWECHSEL)	=====
TURN (DREHUNG)	↻
ERSTE	=====
WESTENREITER	=====
UNION	=====
WESTENREITER	=====



BE READY AT MARKER A

- 1) JOG
- 2) LOPE (LL)
- 3) CHANGE LEADS (SIMPLE OR FLYING)
- 4) LOPE (RL)
- 5) WALK
- 6) JOG
- 7) EXTENDED JOG
- 8) STOP, TURN ON THE FOREHAND 180° LEFT,
- 9) TURN ON THE HAUNCHES 360° RIGHT
- 10) BACK UP (AT LEAST ONE HORSE LENGTH), JOG OUT

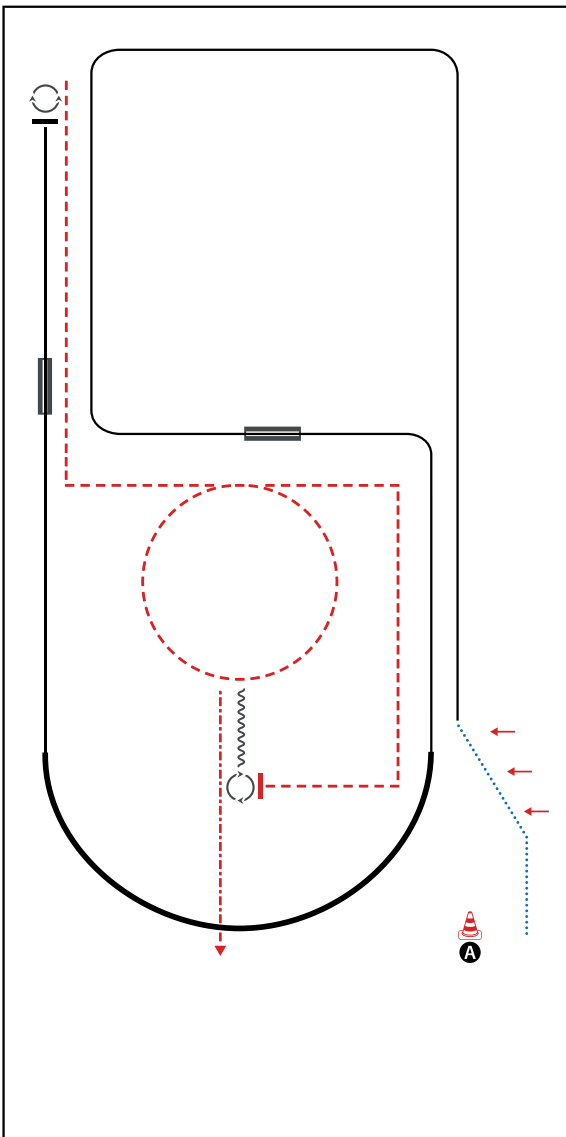
WALK (SCHRITT)	
EXTENDED WALK	
JOG/TROT (TRAB)	
EXTENDED TROT	
LOPE (GALOPP)	
EXTENDED LOPE	
BACK UP (RÜCKWÄRTS)	
LEAD CHANGE (GALOPPWECHSEL)	
TURN (DREHUNG)	
ERSTE	
WESTENREITER	
UNION	
WESTENREITER UND WESTENREITERIN	



BE READY AT MARKER A

- 1) WALK, TWO TRACK RIGHT
- 2) LOPE (RL)
- 3) CHANGE LEADS (SIMPLE OR FLYING)
- 4) LOPE (LL), STOP
- 5) TURN 540° (LEFT OR RIGHT)
- 6) EXTENDED WALK, JOG
- 7) STOP, BACK UP
- 8) JOG
- 9) EXTENDED JOG, JOG
- 10) LOPE (LL), STOP
WALK OUT

WALK (SCHRITT)	
EXTENDED WALK	
JOG/TROT (TRAB)	
EXTENDED TROT	
LOPE (GALOPP)	
EXTENDED LOPE	
BACK UP (RÜCKWÄRTS)	
LEAD CHANGE (GALOPPWECHSEL)	
TURN (DREHUNG)	
ERSTE WESTENREITER UNION WESTENREITER	

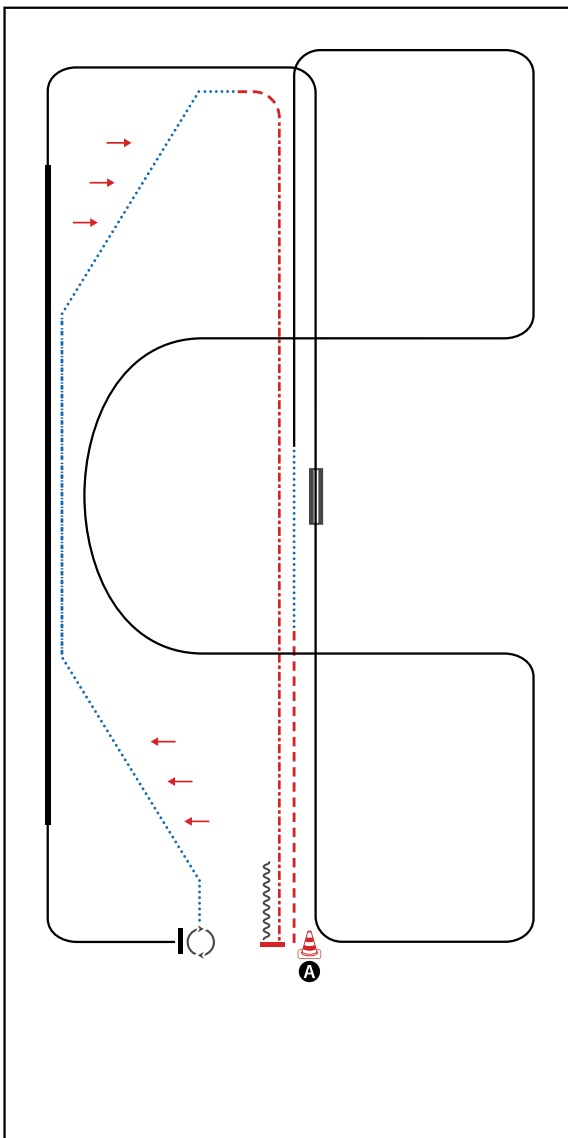


BE READY AT MARKER A

- 1) WALK, TWO TRACK LEFT
- 2) LOPE (LL)
- 3) CHANGE LEADS (SIMPLE OR FLYING)
- 4) LOPE (RL), EXTENDED LOPE (RL), COLLECTED LOPE (RL)
- 5) CHANGE LEADS (SIMPLE OR FLYING), LOPE (LL)
- 6) STOP, TURN 180° (LEFT OR RIGHT)
- 7) JOG CORNER, SMALL CIRCLE, JOG CORNERS
- 8) STOP, TURN 630° LEFT
- 9) TURN 540° RIGHT
- 10) BACK UP (AT LEAST ONE HORSE LENGTH), EXTENDED JOG OUT

WALK (SCHRITT)	
EXTENDED WALK	
JOG/TROT (TRAB)	
EXTENDED TROT	
LOPE (GALOPP)	
EXTENDED LOPE	
BACK UP (RÜCKWÄRTS)	
LEAD CHANGE (GALOPPWECHSEL)	
TURN (DREHUNG)	

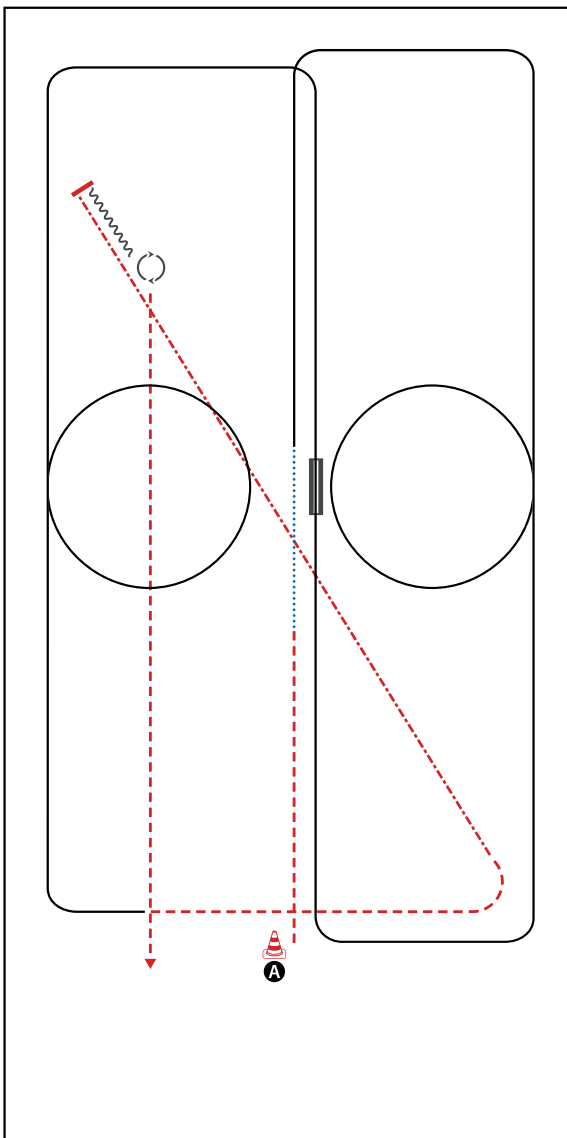
ERSTE WESTENREITER
 UNION WESTENREITER
 WESTENREITER WESTENREITER



BE READY AT MARKER A

- 1) JOG, WALK
- 2) LOPE (RL)
- 3) CHANGE LEADS (SIMPLE OR FLYING)
- 4) LOPE (LL), EXTENDED LOPE (LL), COLLECTED LOPE (LL)
- 5) STOP, TURN 450° LEFT
- 6) WALK, TWO TRACK OR LEG YIELD LEFT
- 7) EXTENDED WALK
- 8) TWO TRACK OR LEG YIELD RIGHT
- 9) JOG, EXTENDED JOG
- 10) STOP, BACK UP (AT LEAST ONE HORSE LENGTH)
WALK OUT

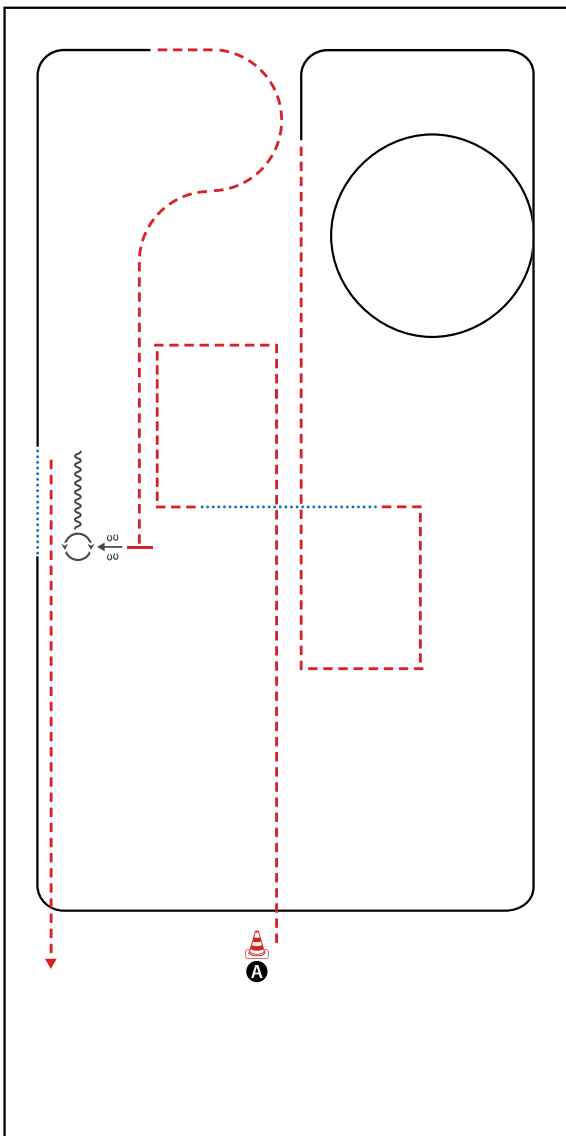
WALK (SCHRITT)	
EXTENDED WALK	
JOG/TROT (TRAB)	
EXTENDED TROT	
LOPE (GALOPP)	
EXTENDED LOPE	
BACK UP (RÜCKWÄRTS)	
LEAD CHANGE (GALOPPWECHSEL)	
TURN (DREHUNG)	
	ERSTE
	WESTENREITER
	UNION
	WESTENREITER



BE READY AT MARKER A

- 1) JOG
- 2) WALK
- 3) LOPE (RL)
- 4) CHANGE LEADS (SIMPLE OR FLYING)
- 5) LOPE (LL)
- 6) JOG
- 7) EXTENDED JOG
- 8) STOP, BACK UP (AT LEAST ONE HORSE LENGTH)
- 9) TURN 585° RIGHT
- 10) JOG
JOG OUT

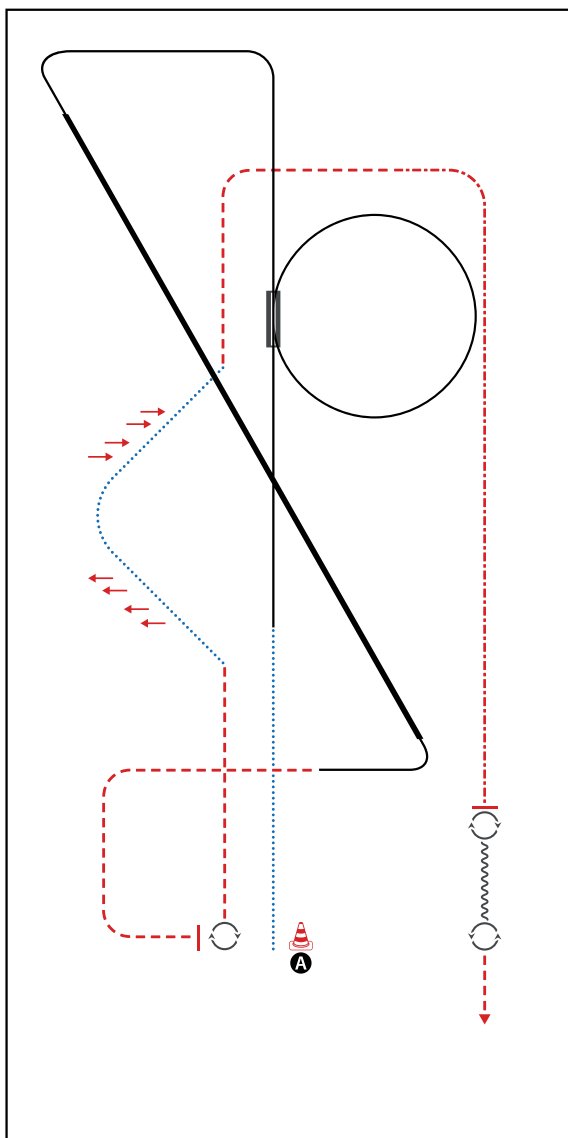
WALK (SCHRITT)	
EXTENDED WALK	
JOG/TROT (TRAB)	
EXTENDED TROT	
LOPE (GALOPP)	
EXTENDED LOPE	
BACK UP (RÜCKWÄRTS)	
LEAD CHANGE (GALOPPWECHSEL)	
TURN (DREHUNG)	
	ERSTE
	WESTENREITER
	UNION
	WESTENREITER



BE READY AT MARKER A

- 1) JOG CORNERS
- 2) WALK
- 3) JOG CORNERS
- 4) LOPE (RL)
- 5) WALK, LOPE (LL)
- 6) JOG, STOP
- 7) SIDEPASS RIGHT
- 8) TURN 360° RIGHT
- 9) BACK UP (AT LEAST ONE HORSE LENGTH)
- 10) JOG
JOG OUT

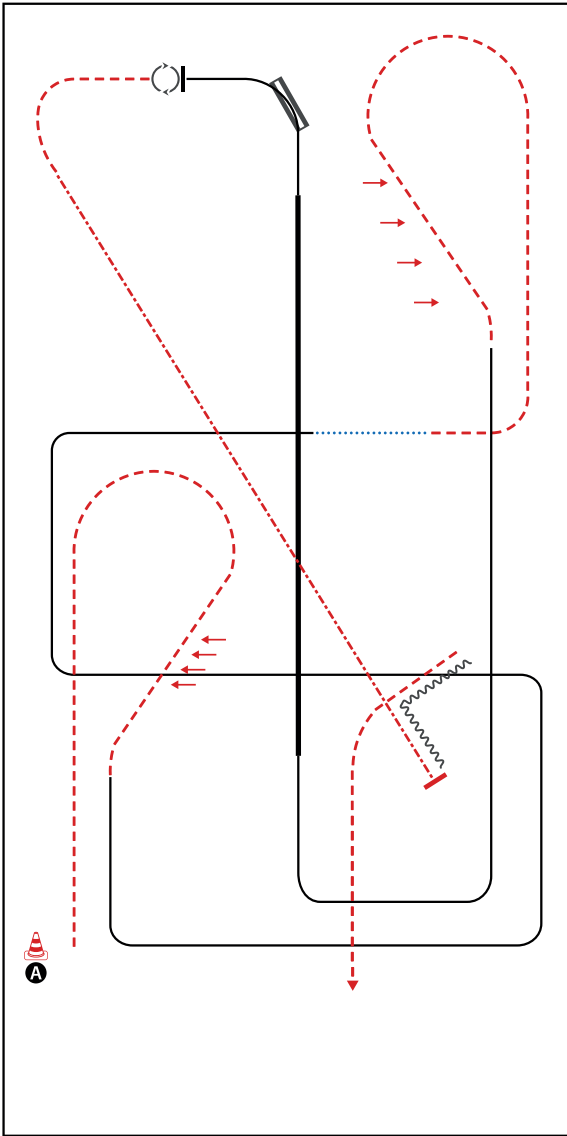
WALK (SCHRITT)	
EXTENDED WALK	
JOG/TROT (TRAB)	
EXTENDED TROT	
LOPE (GALOPP)	
EXTENDED LOPE	
BACK UP (RÜCKWÄRTS)	
LEAD CHANGE (GALOPPWECHSEL)	
TURN (DREHUNG)	
	ERSTE
	WESTERBREITER
	UNION
	WESTERMANNSCHAFT



BE READY AT MARKER A

- 1) WALK, LOPE (LL)
- 2) CHANGE LEADS (SIMPLE OR FLYING), LOPE (RL) CIRCLE
- 3) LOPE (RL)
- 4) EXTENDED LOPE (RL), COLLECTED LOPE (RL)
- 5) JOG, STOP
- 6) TURN 630° RIGHT
- 7) JOG, WALK, TWO TRACK LEFT AND RIGHT
- 8) JOG
- 9) EXTENDED JOG
- 10) STOP, TURN 180° RIGHT
- 11) BACK UP
- 12) TURN 540° LEFT,
JOG OUT

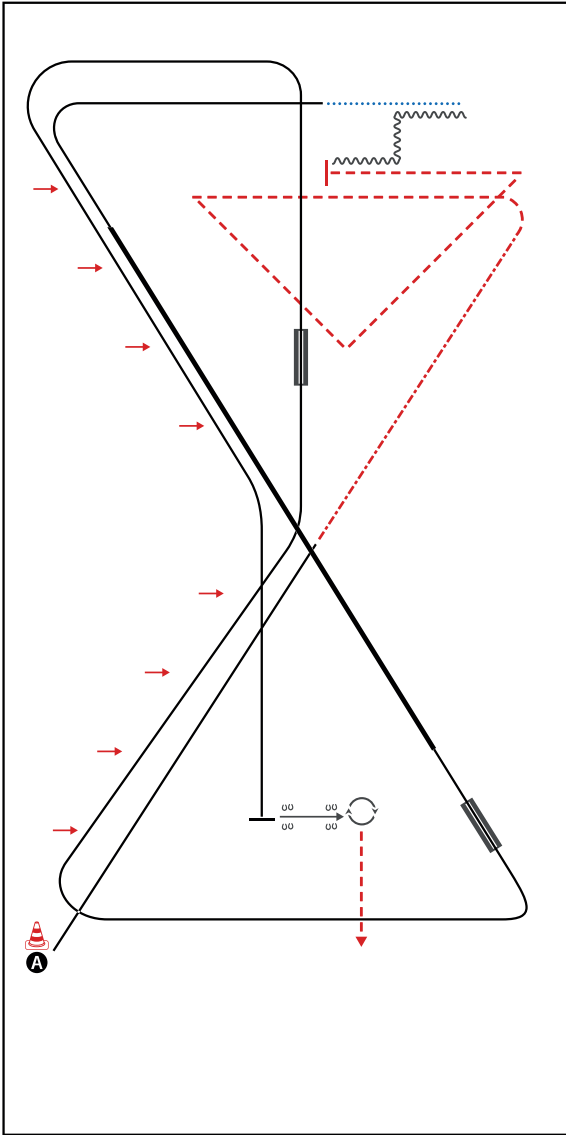
WALK (SCHRITT)	
EXTENDED WALK	
JOG/TROT (TRAB)	
EXTENDED TROT	
LOPE (GALOPP)	
EXTENDED LOPE	
BACK UP (RÜCKWÄRTS)	
LEAD CHANGE (GALOPPWECHSEL)	
TURN (DREHUNG)	
ERSTE	
WESTENREITER	
UNION	
WESTENREITER	



BE READY AT MARKER A

- 1) JOG, TWO TRACK RIGHT
- 2) LOPE(LL) CORNERS
- 3) WALK
- 4) JOG, TWO TRACK LEFT
- 5) LOPE(RL) CORNERS
- 6) EXTENDED LOPE (RL), COLLECTED LOPE (RL)
- 7) CHANGE LEADS (SIMPLE OR FLYING), LOPE (LL)
- 8) STOP, TURN 180° FOREHAND TURN RIGHT, 540° TURN ON THE HAUNCHES (LEFT OR RIGHT)
- 9) JOG, EXTENDED JOG
- 10) STOP, BACK UP, JOG OUT

WALK (SCHRITT)
EXTENDED WALK
JOG/TROT (TRAB)	-----
EXTENDED TROT	-----
LOPE (GALOPP)	-----
EXTENDED LOPE	-----
BACK UP (RÜCKWÄRTS)	~~~~~
LEAD CHANGE (GALOPPWECHSEL)	=====
TURN (DREHUNG)	
ERSTE	
WESTENREITER	
UNION	
WESTENREITER	



BE READY AT MARKER A

- 1) LOPE (RL)
- 2) EXTENDED JOG
- 3) JOG CORNERS
- 4) STOP, BACK UP, WALK
- 5) LOPE (LL), EXTENDED LOPE, COLLECTED LOPE
- 6) CHANGE LEADS (SIMPLE OR FLYING)
- 7) LOPE (RL), TWO TRACK RIGHT
- 8) CHANGE LEADS (SIMPLE OR FLYING)
- 9) LOPE (LL), TWO TRACK LEFT
- 10) STOP, SIDEPASS LEFT, TURN 360° (LEFT OR RIGHT), JOG OUT

WALK (SCHRITT)
EXTENDED WALK
JOG/TROT (TRAB)
EXTENDED TROT
LOPE (GALOPP)
EXTENDED LOPE
BACK UP (RÜCKWÄRTS)
LEAD CHANGE (GALOPPWECHSEL)
TURN (DREHUNG)
ERSTE
WESTERWEITER
UNION
WESTERWEITERER WESTERWEITER